

## ASSEMBLY INSTRUCTIONS

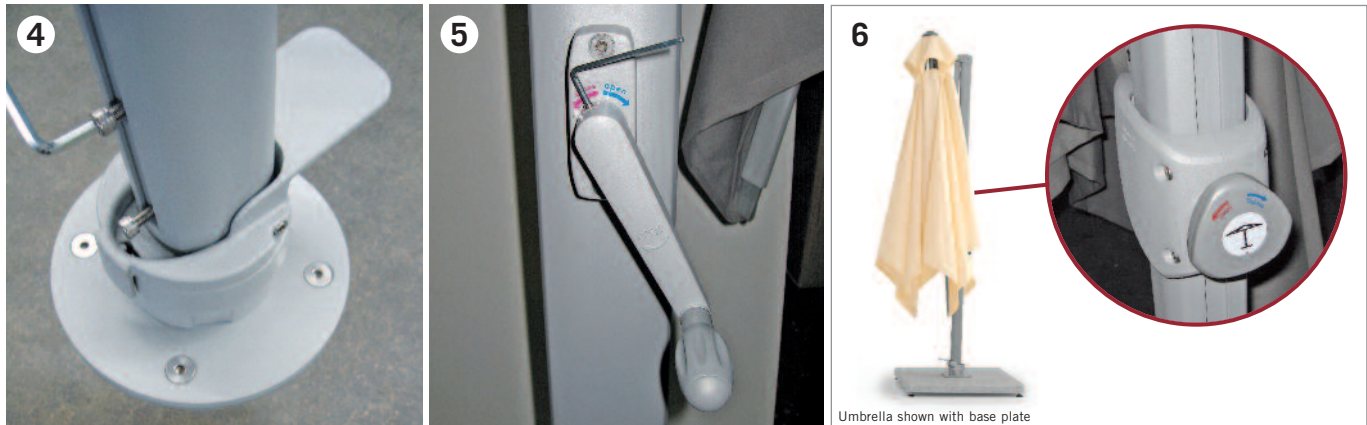
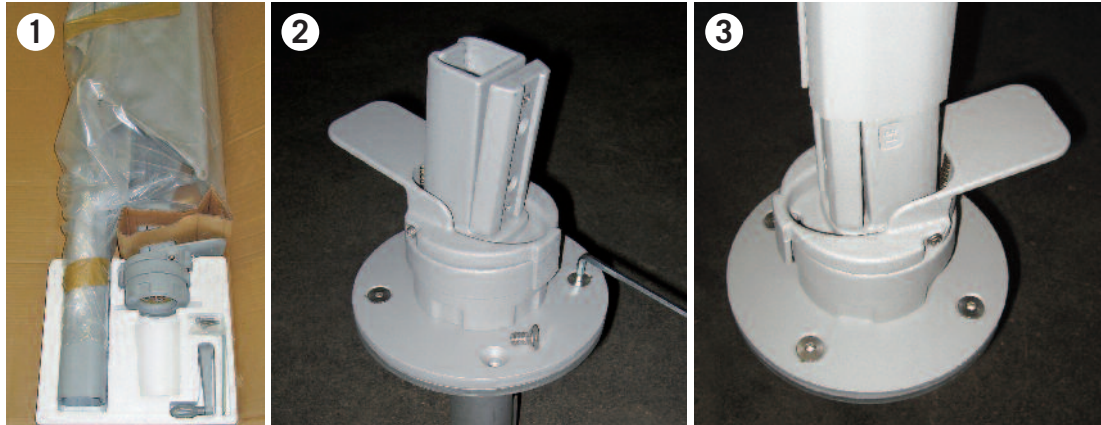
# CANTILEVER UMBRELLA - GROUND SLEEVE



- ➊ **Scope of delivery:** 1 x cantilever umbrella, 1 x adapter, 2 x cylinder head screw M8 x 25 mm, 1 x 2,5 mm Allen key, 1 x 6 mm Allen key, 1 x crank mechanism, (4 x countersunk screw M8 x 20 mm as an alternative to the 4 x screws M8 x 25 mm, included with the ground sleeve).
- ➋ Fit the adapter onto the concreted-in cantilever umbrella ground sleeve as described in the assembly instructions "Ground sleeve for cantilever umbrella."
- ➌ Remove the cantilever umbrella from its packaging and place it on the adapter. (Umbrella canopy must be on the same side as the adapter foot pedal).
- ➍ Screw the umbrella pole to the adapter using the 2 cylinder head screws. You will need the 6 mm Allen key to do this.
- ➎ Now fit the crank mechanism and tighten with the 2,5 mm Allen key.
- ➏ **Putting up the umbrella:**  
Step 1: Release the hand wheel at the umbrella pole.  
Step 2: Crank the umbrella canopy into extended position.  
(The locking slide automatically moves upward as you do so).  
Step 3: Set the umbrella canopy to the desired angle and lock the hand wheel in position.
- ➐ The umbrella can be rotated around its own axis using the adapter foot pedal.

ASSEMBLY INSTRUCTIONS

CANTILEVER UMBRELLA - GROUND SLEEVE



Umbrella shown with base plate



Umbrella shown with base plate

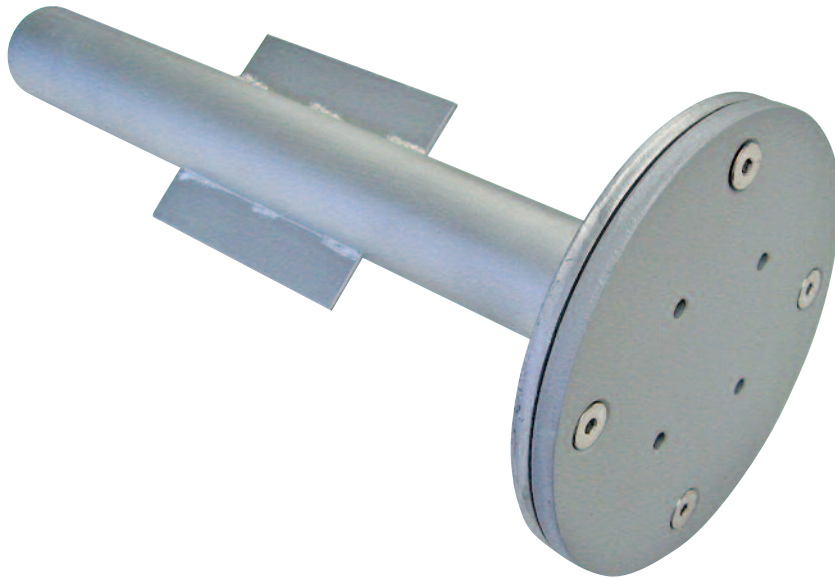


Umbrella shown with base plate



## ASSEMBLY INSTRUCTIONS

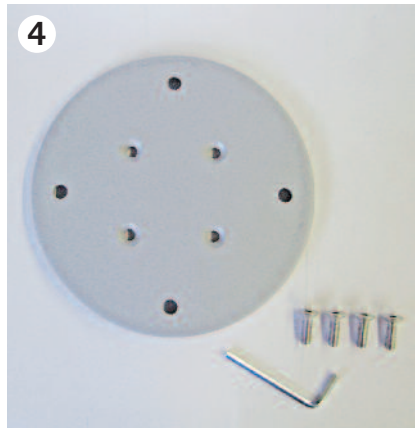
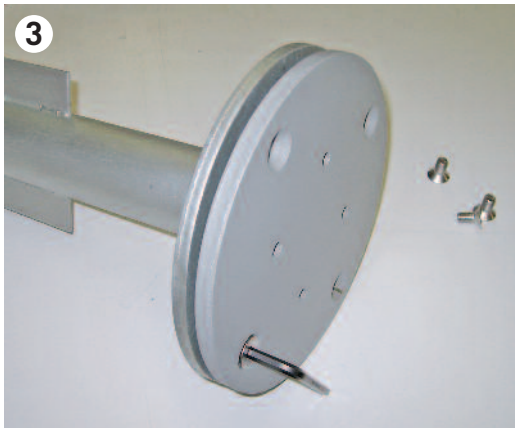
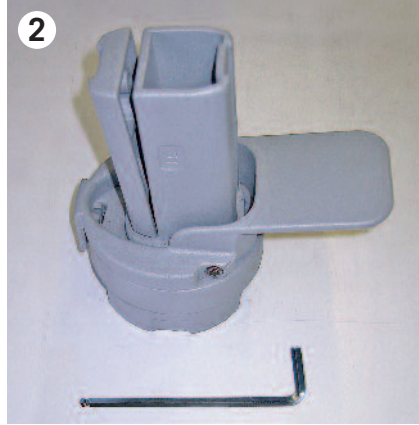
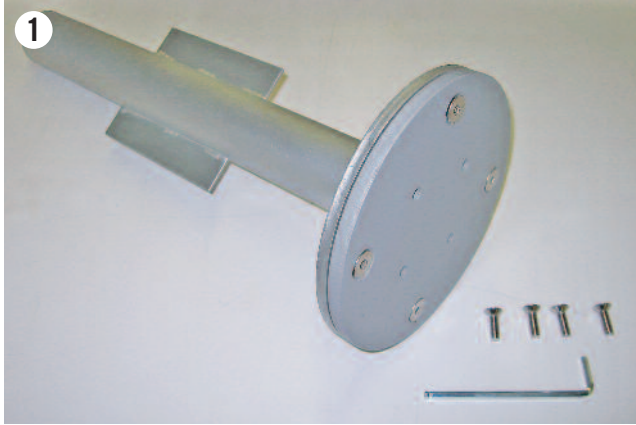
# GROUND SLEEVE FOR CANTILEVER UMBRELLA



- 1** **Scope of delivery:** 1 x ground sleeve for cantilever umbrella, 1 x adapter plate (bolted together), 4 x countersunk screw M10 x 20 mm, 4 x countersunk screw M8 x 25 mm (or alternatively 4 x countersunk screw M8 x 20 mm, included with cantilever umbrella), 1 x 5 mm Allen key
- 2** You will also require the following, enclosed in the **cantilever umbrella packaging**: 1 x adapter, 1 x 6 mm Allen key
- 3** Unscrew the adapter plate from the ground sleeve using the 6 mm Allen key.
- 4** Now mount the adapter plate on the adapter using the 4 countersunk screws (M8 x 25 mm or M8 x 20 mm) and tighten using a 5 mm Allen key. Make sure that the recesses in the adapter plate are on the correct side.
- 5** Set the ground sleeve for the cantilever umbrella in concrete as described in the assembly instructions on the next page.
- 6** When the ground sleeve has been concreted in, the adapter plate with the attached adapter can be screwed onto the ground sleeve.  
Required materials: 4 x countersunk screw M10 x 20 mm and the 6 mm Allen key.

ASSEMBLY INSTRUCTIONS

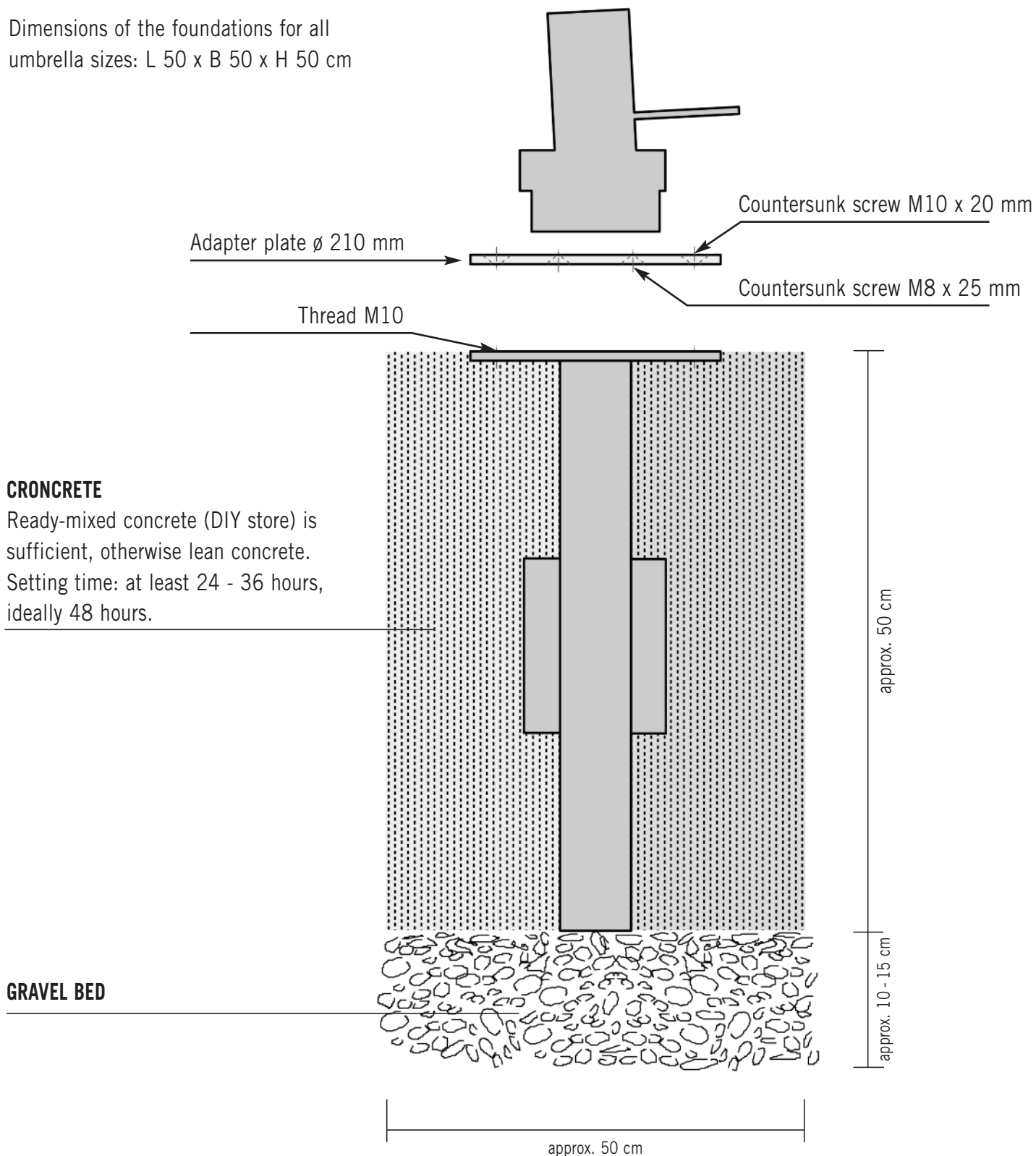
GROUND SLEEVE FOR CANTILEVER UMBRELLA



## INSTALLATION INSTRUCTIONS

# FOUNDATION FOR CANTILEVER UMBRELLA GROUND SLEEVE

Dimensions of the foundations for all  
umbrella sizes: L 50 x B 50 x H 50 cm



# WEISHÄUPL

WERKSTÄTTEN