

## ASSEMBLY INSTRUCTIONS

# WIPP EXTENDING TABLE

### Scope of delivery:

Wipp extending table with 1 extension piece, 4x washers, 4x M8 lock nuts, 1x protective cover for table extensions.

A second extension is available as an option. This second extension is not included in the scope of delivery.

### Assembly:

- 1 Place the table with the tabletop facing downwards on a level surface and screw on the four table legs as shown. Make sure that the two handwheels are tightened.
- 2 Now turn the table over and release the two handwheels. Stand in the center of the long side of the table (see Fig. 2), pull the two halves of the table top apart and remove the cardboard box protecting the components during transport. Now fit the protective cover over the two inside extensions, push the table top sections back together and tighten the handwheels again. Your extending table is now assembled and ready for use.

### Instructions for use:

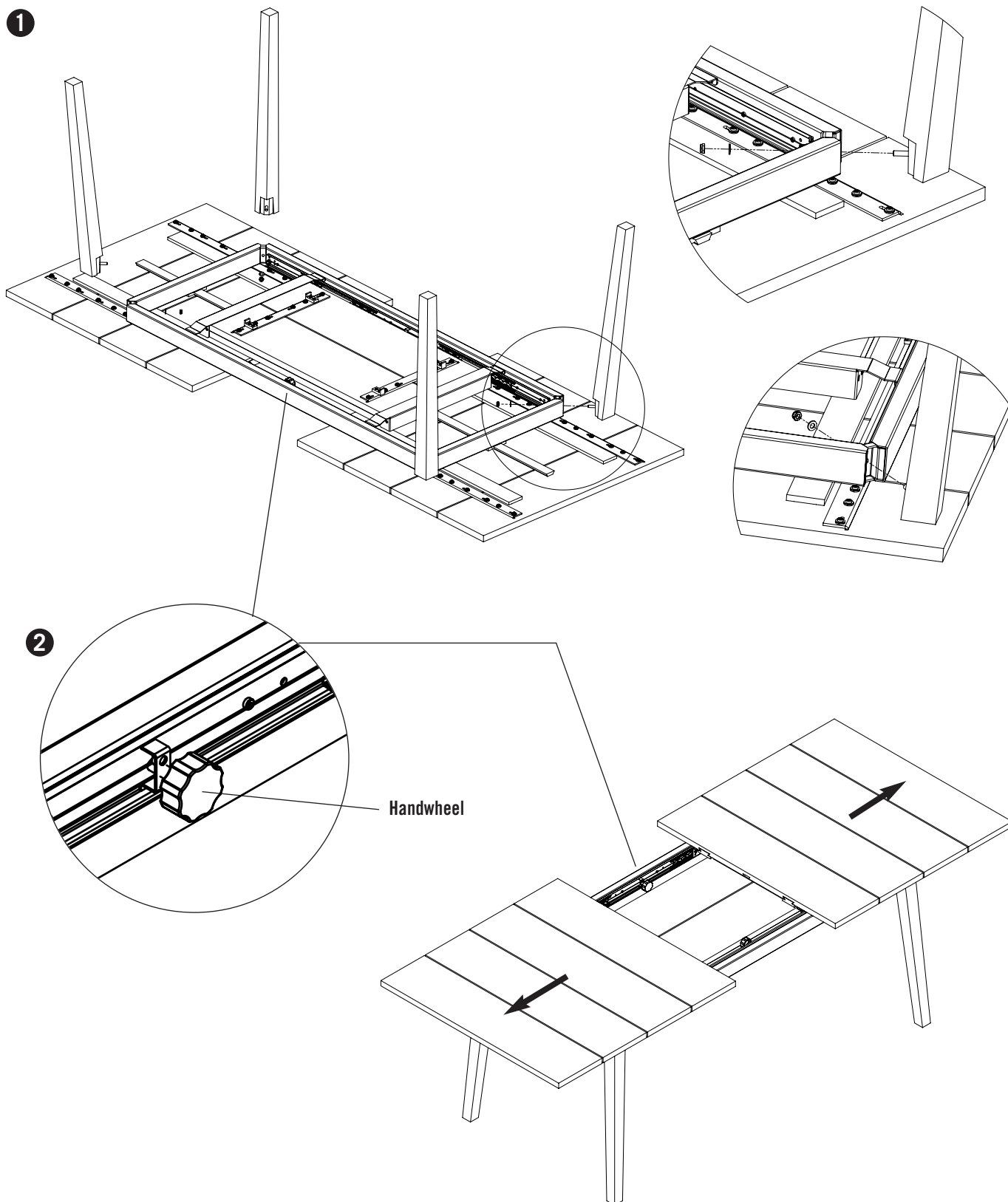
- 3 To fit the extension, proceed as follows: Release the handwheels on both sides, and, standing in the center of the long side of the table (see Fig. 2), pull the two halves of the table top apart. Now remove the protective cover and take the extension out of the holder. When inserting the extension, ensure that the positioning brackets for the extension are on the outside of the table frame (see Fig. 3, detail view).
- 4 Finally, push the two sections of the table top together and tighten the handwheels again.

### Removing the extensions where two extensions are used:

Please ensure that you place the extensions back in the holder as shown in Fig. 3.

# ASSEMBLY INSTRUCTIONS

## WIPP EXTENDING TABLE



# ASSEMBLY INSTRUCTIONS

## WIPP EXTENDING TABLE

